

## Existing residents in new homes



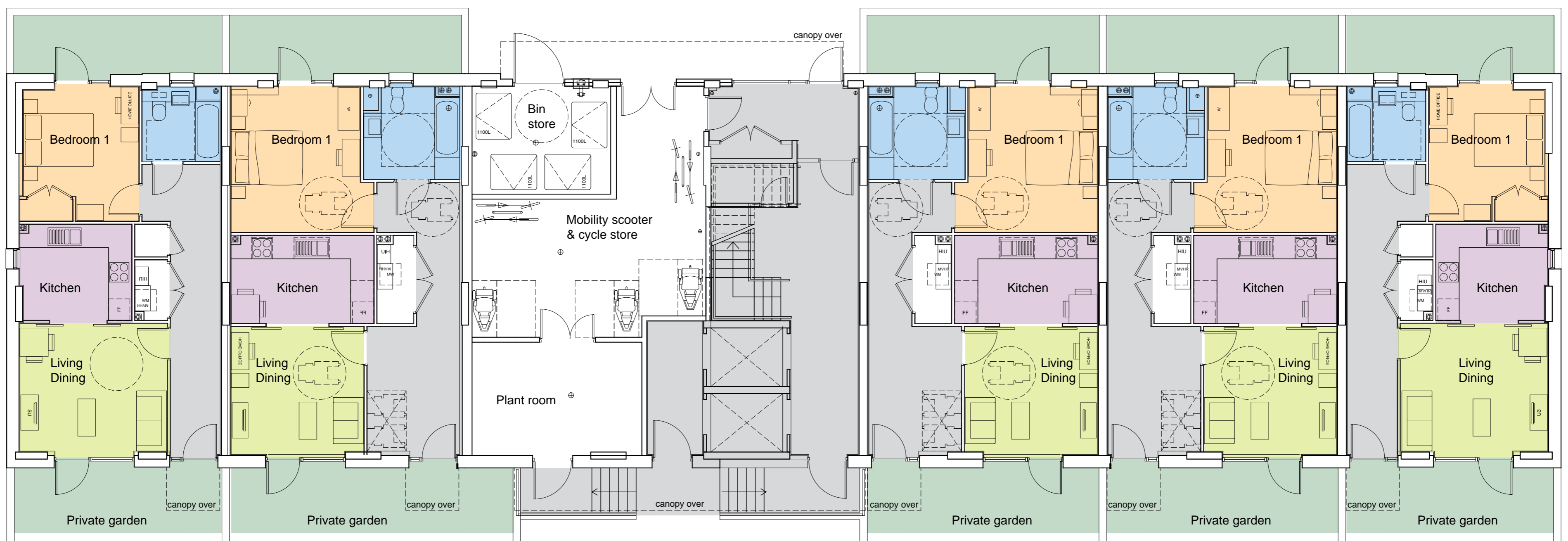
Some residents of Romford House will move into the new purpose built Block H. These new homes include:

- Safe, well lit, front door with secure access
- Generous rooms
- Flexible layouts – such as enclosed kitchens, or open plan living rooms
- Well lit homes with pleasant views across the park
- A shared garden and outside space for each flat
- Adaptable designs so that other independent living aids, space for wheelchair storage, mobility vehicles etc can be introduced easily if required in the future
- Good storage with built in cupboards
- Efficient heating and energy systems to keep bills down
- Every flat is accessible by a lift (there will be two lifts)
- A store room for motorised scooters is located next to the lifts
- South facing living rooms and balconies

The phasing of building work will ensure the new homes are completed so the Romford House residents move directly into these new homes.



TYPICAL UPPER FLOOR PLAN



GROUND FLOOR PLAN

### KEY

- Kitchen/Living/Dining
- Living/Dining
- Kitchen
- Bedroom
- WC/Bathroom
- Circulation Space
- Outdoor Space