

# Dover Court Estate Regeneration Residents Newsletter

Issue 21 | August 2020

Welcome to the August issue of the Residents Newsletter aiming to inform you about all the exciting changes to your estate, and update you on progress.

## PROGRESS

### Phase 2

#### Block D:

- *Internal snagging and finals works are progressing*
- *Due to complete in August and handover to Islington Council*

#### Block E:

- Scaffold has been struck around the entrance of the block
- Brick work has now been completed
- Second fix carpentry works have commenced
- Service connections are all in

#### Block G:

- Brick work has now been completed
- Scaffold has been struck around the building
- Second fix internal trades works are on going, with floor finishes in progress
- Commissioning has commenced in the block

***Second fix refers to all the work after plastering to the final finished house.***

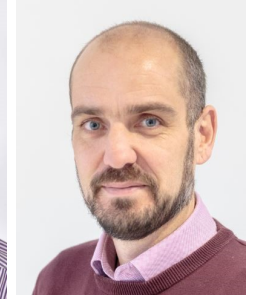
## Lovell Team



**MICHAEL GEORGE**  
PROJECT MANGER



**GEOFF HOLLIS**  
Site Manager



**RUSSELL LANE**  
Operations Manager



**Block D: Toilet**



**Kitchen**

## Site Operating Hours

Monday to Friday 08:00–18:00

Saturday 08:00–13:00

Our site team will keep you informed about site activities with regular newsletters. The site team are also available to answer any questions you may have and welcome your feedback. Visit the site compound or contact the team on the numbers above.

Join us online and keep up to date with all things Lovell



Londonlovell



Lovellhomes



@lovell\_uk

## WHO DO YOU CONTACT?



If you have any questions about any of the construction works do not hesitate to contact Alexandra who will do her best to find you answers. Her contact details are as follows;

Email: [Alexandra.Robins@lovell.co.uk](mailto:Alexandra.Robins@lovell.co.uk)

Tel: **07976 225300** or

**0208 731 3800**

Information is also available on the website at [dovercourtheregeneration.co.uk](http://dovercourtheregeneration.co.uk)

## Thank you!

The Lovell team would like to say a big thank you for your patience and support so far. We acknowledge that there will inevitably be some inconvenience during the delivery of the works but we will do our utmost to keep this to a minimum. We will continue to keep you informed throughout the project.



**LOVELL**

In Partnership with

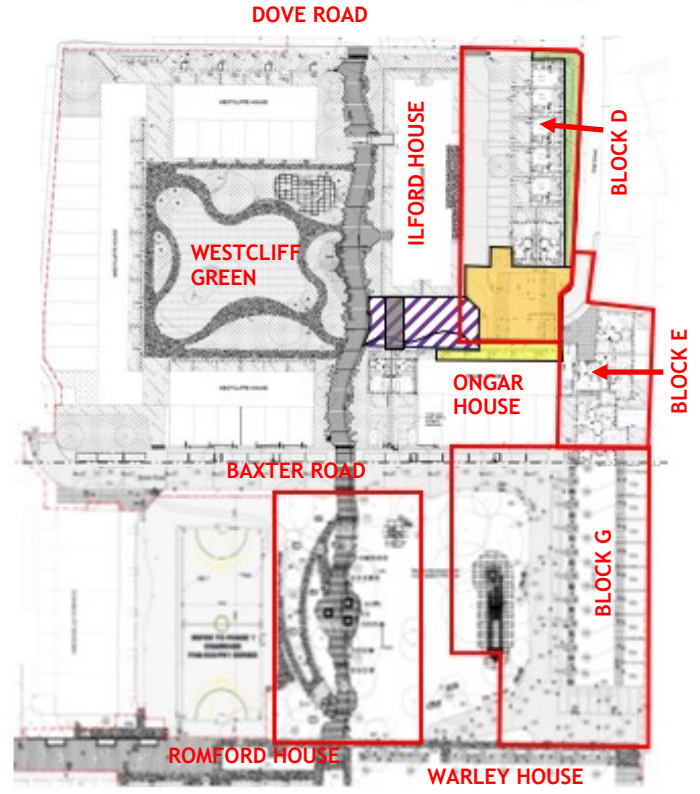
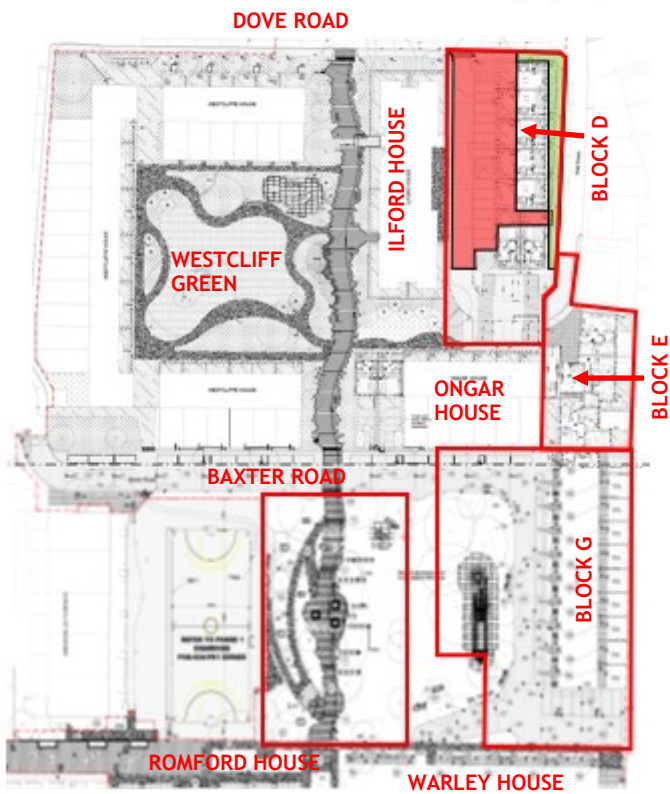


**ISLINGTON**



August/September

August/September



## EXTERNAL WORKS

External works are underway, with the area between Ilford House and Block D soon to be completed. For works to progress across the Dover Court Estate all residents with a parking bay in front of Warley House and in between Ongar House and Westcliff House will be relocated to the new parking bays outside Block D.

Works will include the realignment of Baxter Road, completion of the final park area and the front gardens to Ongar House. With hard and soft landscaping, new road and footpaths there will be some parking suspensions and road and footpath closures which will inevitably cause some inconvenience, but please be assured that we will do everything we can to minimise disruption to residents. Works will be carried out in areas to try and minimise the impact to the residents.

Ongar House front garden works are due to commence Wednesday 19th August and should take approximately 4 weeks to complete. All residents at Ongar House have been notified separately regarding these works with a full description of the process.

Warley House works are due to commence week commencing Monday 26th August and should take approximately 4 weeks to complete. These works will include hard and soft landscaping to the footpaths, road/parking and surrounding areas. Play equipment for the area between Warley House and Block G is due on site mid-September with installation programmed shortly after.

Baxter Road will be closed from the end of September, this will be a full closure including parking bays. This will be from the parking area outside Warley House to the small carpark outside Callaby Terrace on Henshall Street.

The access road running through Westcliff will be partially closed within the next 8 weeks. Due to diverted routes, works to the new path running from Westcliff House to Romford House will be in stages to minimise the impact to the residents. The first stage will be the area between Ongar House and Westcliff House.

More information will be available to view at <http://www.dovercourtheregeneration.co.uk> and in the notice boards, or contact Alexandra who can forward the information direct.

## PARKING

The suspended parking bays on Dove Road will remain suspended until September 2020. Parking bays along Baxter Road will be suspended from September 2020. Residents with parking bays in front of Warley House and between Ongar House and Westcliff House will be contacted by Islington Council to discuss alternative parking arrangements during the Baxter Road resurfacing works.